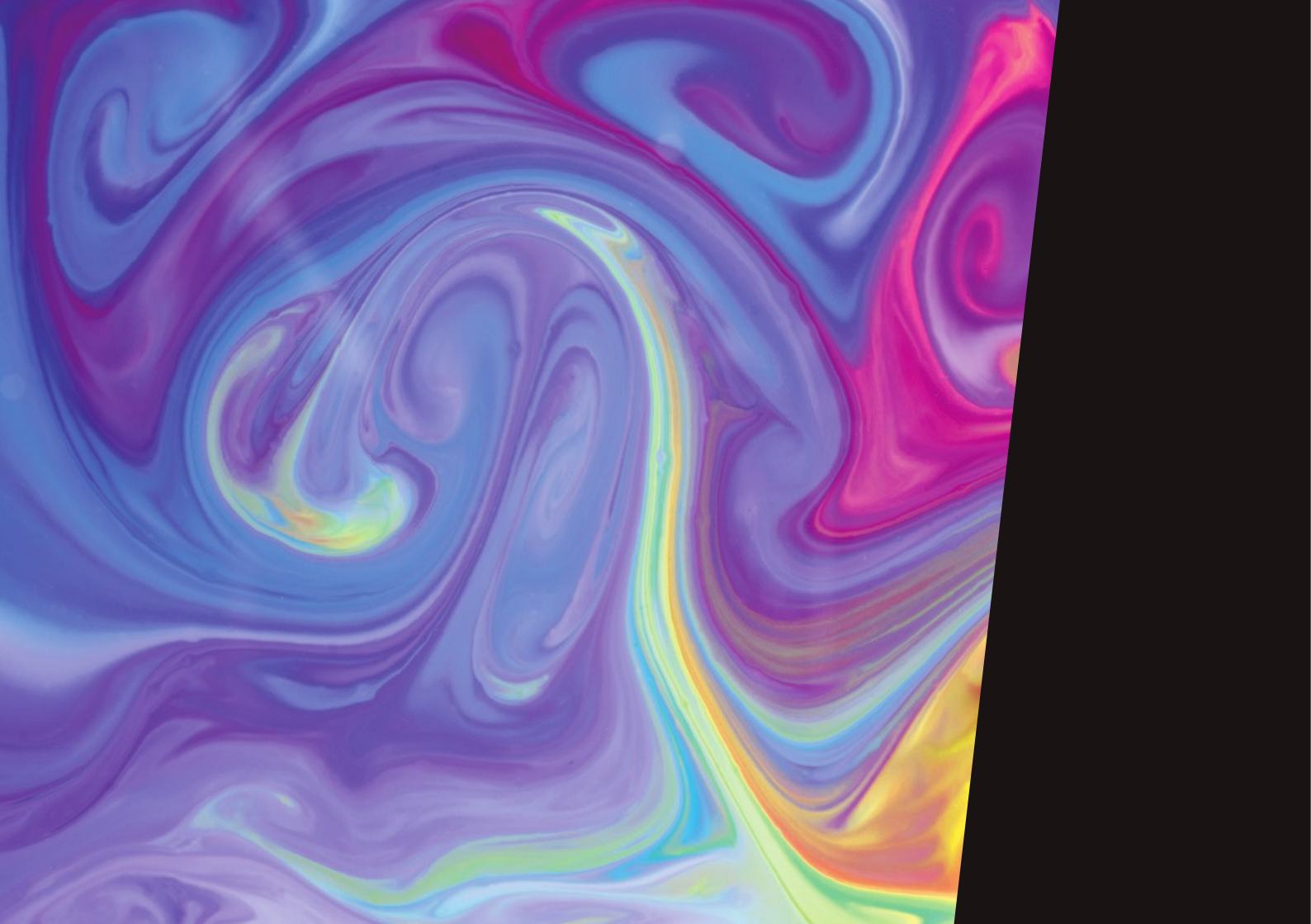


Spatial
Economics

CAPABILITY STATEMENT





ABOUT US

THE SPATIAL ECONOMICS' TRACK RECORD INCLUDES RESEARCH, DATA ANALYTICS AND GEOSPATIAL INFORMATION SYSTEM. OUR RESEARCH AND ANALYTICAL SKILLS ARE GROUNDED IN OUR CONCEPTUAL THINKING AND TECHNICAL CAPABILITIES, COMBINED WITH A WELL-DEVELOPED UNDERSTANDING OF THE CONTEMPORARY POLICY SETTING IN NEW ZEALAND.

SPATIAL ECONOMICS IS A STARTUP COMPANY SPECIALISED IN QUANTITATIVE METHODS AND LOCATION TECHNOLOGIES. SINCE FORMATION IN 2018, WE HAVE DEVELOPED A REPUTATION FOR DELIVERING EXCELLENT OUTCOMES AND INSIGHTFUL SOLUTIONS IN THE FOLLOWING AREAS:

- RESEARCH
- DATA ANALYTICS
- DATA SCIENCE
- GEOSPATIAL INFORMATION SYSTEM
- MODELLING
- DATA SOURCES



OUR APPROACH

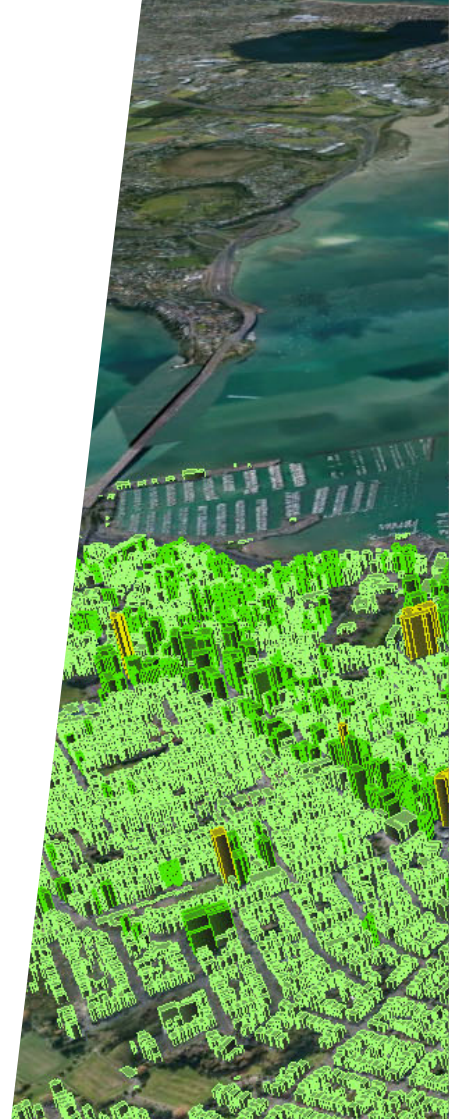
WE ARE DISTINCTIVE IN OUR DEMONSTRATED ABILITY TO TRANSLATE THEORETICAL RESEARCH INTO PRACTICAL SOLUTIONS.

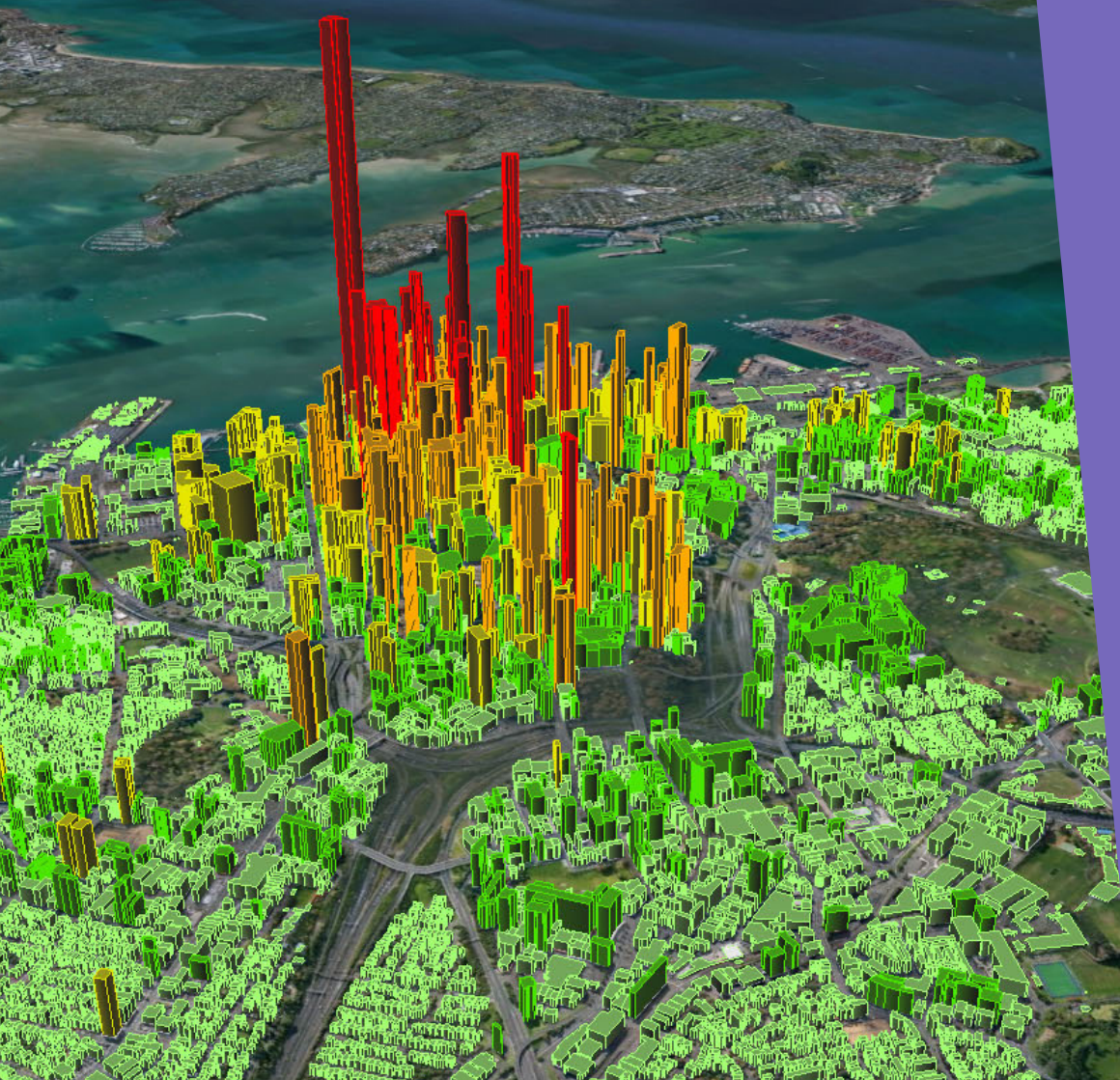
Spatial Economics takes an interdisciplinary approach to address our clients' needs combining expertise in planning theory, economics, quantitative methods, data science, python programming and geospatial information system.

We have a demonstrated track record in engaging with complex and unusual projects.

Spatial Economics is engaged in:

- > Contract research and consultancy
- > Developing python tools for data analytics
- > Data visualisation through maps and graph
- > Web mapping and dynamic data visualisation.







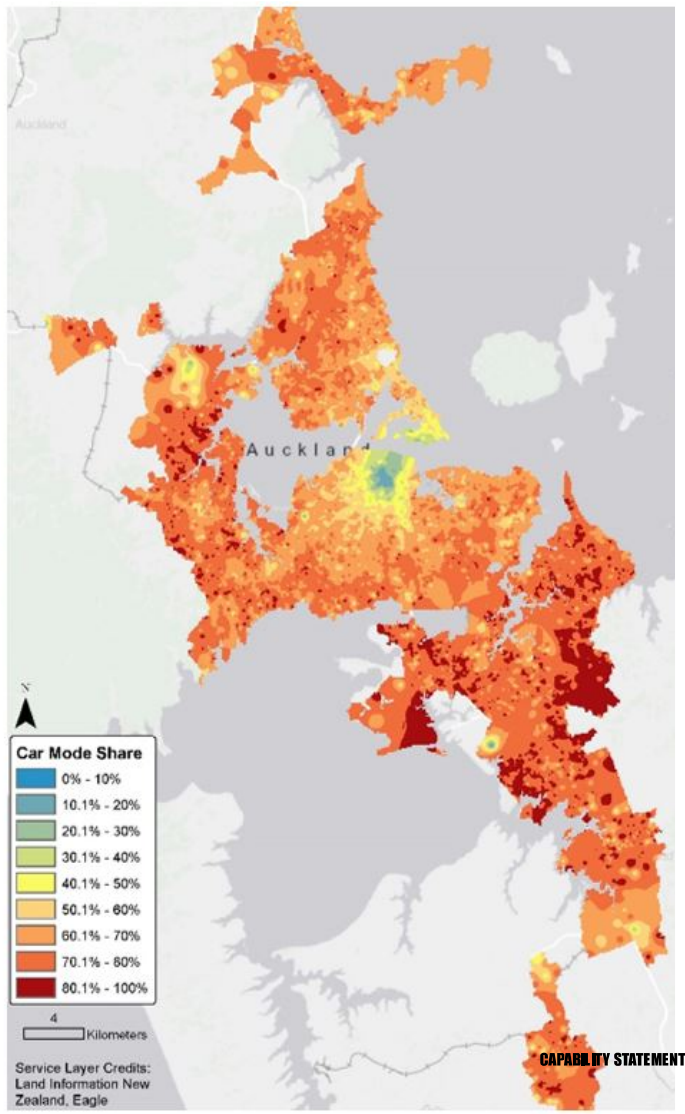
Dr. Saeid Adli

Director

Saeid is a PhD from the University of Auckland. He has over 16 years of professional experience in urban, transport and regional planning in Iran, New Zealand and Australia. Since moved to New Zealand in 2011, Saeid has been involved in land use and transport planning projects for regional government clients in New Zealand and Australia.

Saeid is an experienced project manager and thought leader. His career has focused on complex socio-economic and land use issues. His conceptual thinking and technical capabilities enable him to deliver innovative strategic solutions and articulate this at varying degrees of complexity. Saeid is a specialist at translating complex concepts into simple messages through meetings and workshops.

Auckland



Spatial Economics

CONTACT US

Director
Dr. Saeid Adli
E. saeid.adli@spatialeconomics.co.nz
M. **022344551**

